

SWFSA Construction 03-23-2020

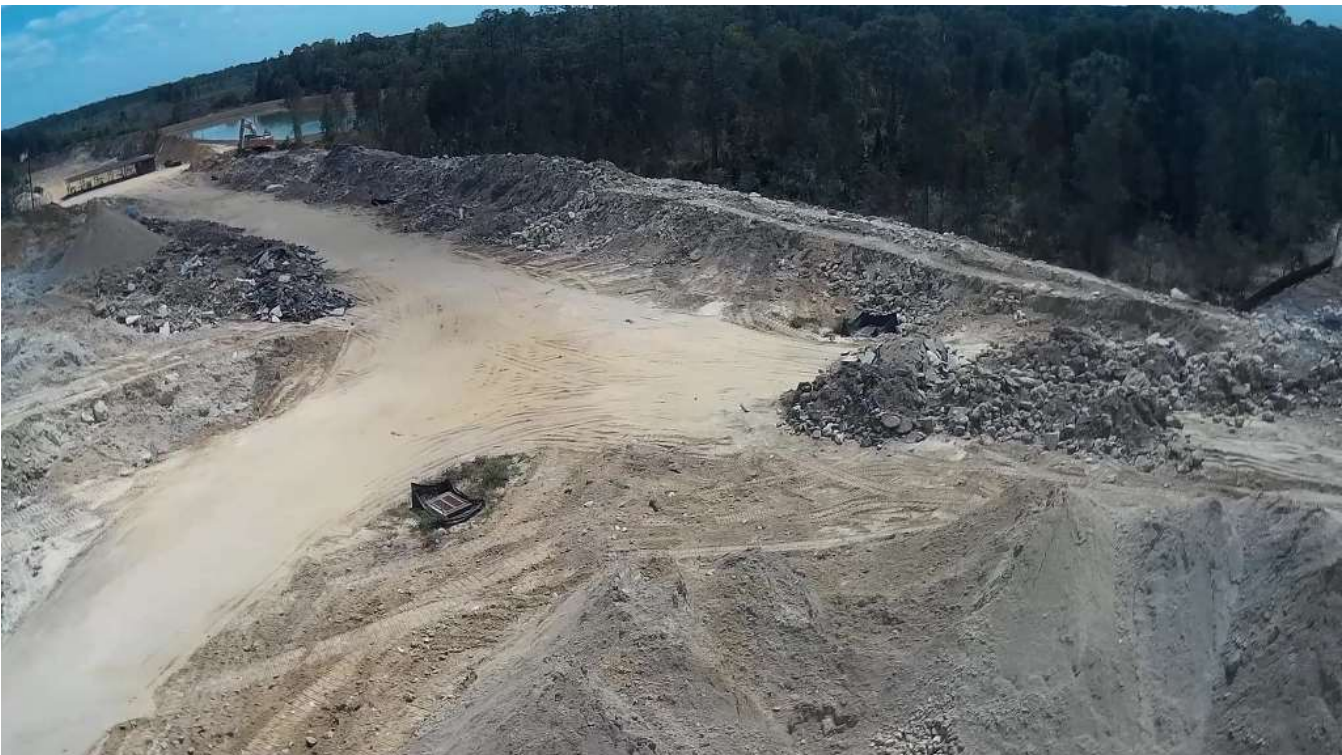
The Storm Water Lake and Gator Recreation Area (aka New Pond) is COMPLETE (!!) including bahia sod.

The berms are starting to take shape, with numerous truckloads of rock and dirt. We have been fortunate to obtain material from Cape Coral's ongoing excavations.

First, the magnificent New Pond (the bahia sod is brown now, but will green up with rain—eventually).



It is nearly impossible to appreciate the height of the rock and dirt mounds in aerial views; this is at only about 20 ft.



SWFSA Construction 03-23-2020

The color coding in the next photos is the same as in previous photos and overall diagram.

Green= New Bays (as numbered) and new berms.

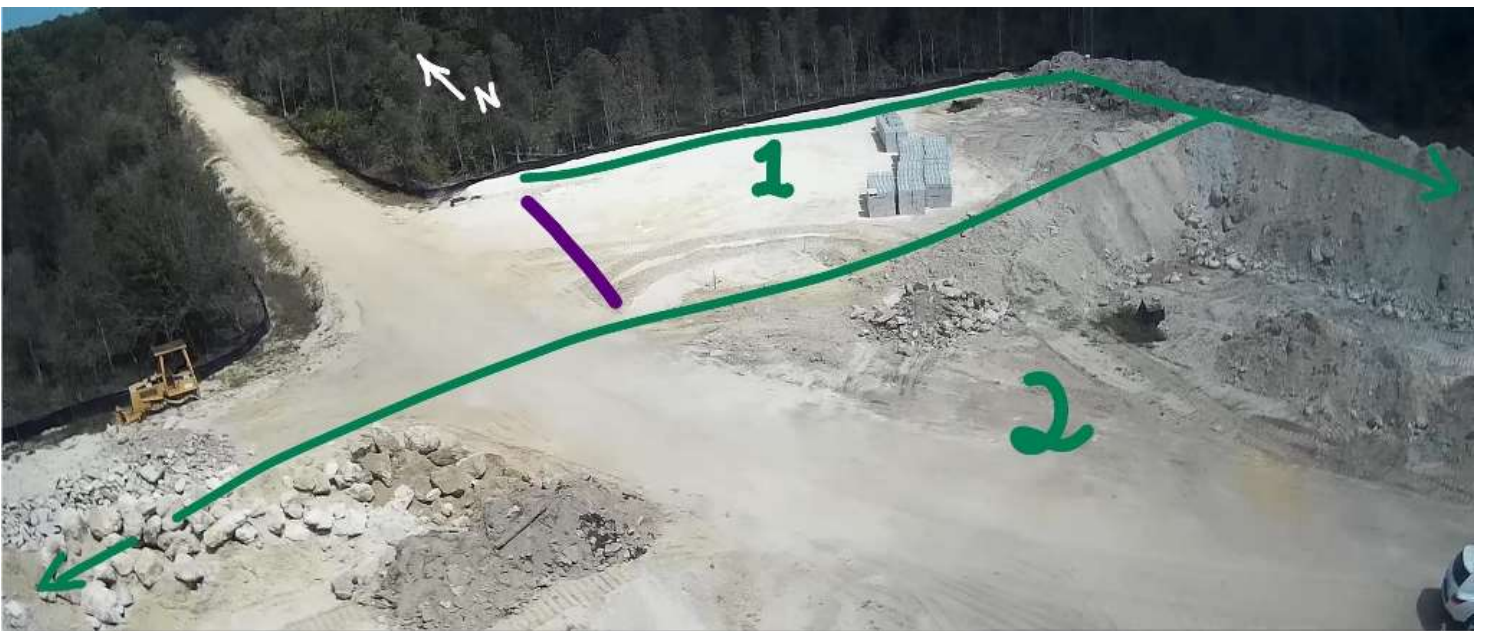
Purple= approximate slab/shooting locations.

R.R.= Rest Rooms.

Yellow=roadway (& parking).

The views are approximately clockwise in order, starting from the new entrance road looking north:







Bay 3 (300 yd range) looking East. The new pond is at the top right.





These are Bays 4 and 5. Note the numerous drainage grates surrounded by black fabric (black "squares").

